

# East Surrey Domestic Abuse Services

# ANNUAL REPORT

01.04.18 - 31.03.19

---



# Contents

## Page

3	Legal and Administrative Information
4	Who we are and what we do
5	Letter from the Chair
6	Our year at a glance
8	Summary of the Year
10	Children's Work
12	Volunteers
13	Groupwork
15	Other Services
20	Training and Awareness Raising
21	Fundraising
22	Our Supporters
23	Financial Review
25	Plans for Future Periods
26	Structure, Governance and Management
28	Accounts and Financial Report
39	Glossary

# Legal and Administrative Information

Charity Name	East Surrey Domestic Abuse Services (ESDAS) (A Company Limited by Guarantee)
Charity No:	1092643
Company No:	3585674
Principal Address & Registered Office	Redhill Chambers 2D High St Redhill RH1 1RJ
Telephone	01737 771350 (Outreach Service) 01737 771780 (Chief Executive)
SMS	07860 039720
Fax	01737 771284
Email	support@esdas.org.uk
Website	www.esdas.org.uk
Twitter	@Esdas1
Facebook	East Surrey Domestic Abuse Services
Directors/Trustees	Simon Bland - Chair Phillip Bell - Finance Director Janet Hails Tracey Agnew - resigned June 2018 Sarah Crosbie Paul Studley Luke Hart - appointed Nov 2018 Joanna Jeffrey - appointed Nov 2018
Senior Management Team	Michelle - Chief Executive (Maternity Leave from Jan 2019) Miatta - Services Manager (Acting CE from Jan 2019) Mary - Services Manager Anne - Volunteer & Group Work Manager
Accountants	Braidwood Wheeler Goodman House 13a West Street Reigate Surrey RH2 9BL
Principal Bankers	Lloyds Banking Group Ltd Horley

# Who we are and what we do

## Our aims and objectives

**The Charity's objectives are the relief of need, hardship and distress of persons who have suffered and are suffering from domestic abuse (DA) and any children of such persons, in particular by the provision of advocacy, advice, support and information.**

We support survivors and their children through a needs-led approach, recognising their individual experiences and enabling them to achieve their goals.

We work in partnership with many statutory and community organisations to ensure that survivors receive the right response at the right time, encouraging innovative practice that evolves in the light of experience and feedback from survivors.

We actively participate in the Surrey Against DA (SADA) Partnership and are the lead partner for the 4 Surrey DA Services (SDAP).

We continue to participate in Change that Lasts which aims to ensure that survivors and their children can access help wherever they disclose it, underpinned by the principles of safety, freedom and independence.

Each year we provide training for professionals from all agencies across Surrey.

## The ESDAS promise

- We believe everyone has a right to live without fear and free from abuse and violence.
- We will challenge injustice and discrimination.
- We will challenge misconceptions, stigma and stereotypes around domestic abuse.
- We will help to empower individuals to have a voice and reach their full potential.
- We will respect and value an individual's right to make choices and decisions.
- We will work with integrity, honesty and respect.
- We will strive to be innovative and pro-active to meet individual needs in a changing world.
- We will create and take advantage of opportunities to raise awareness of domestic abuse and promote healthy relationships.
- We will actively promote equality and diversity.



# Letter from the Chair

Every year is an interesting year for organisations in the charity sector, but this last year has proved to be more interesting than most for ESDAS with two attainments at a national level. The award of an MBE for Michelle, our CEO, was well deserved in recognition of her role in furthering the cause of DA survivors in Surrey.

Secondly, after a thorough and probing application process, we were proud recipients of a GSK Impact Award - one of only ten in the country.

On an organisational level the Management Team and Trustees have spent a good deal of time considering strategic direction. ESDAS is recognised for the good work it does, and has enjoyed considerable growth over many years without losing its core ethos of being 'needs led'. There can be no doubt that the context in which it operates will continue to be subject to on-going change. It is important, to help ensure lasting viability, that we look to prepare the organisation to meet the needs of the community it serves, and work effectively with partner organisations and funders. We propose a rebalancing of the way resources are committed over the coming years, with a slight shift towards great levels of community engagement. This is with the aim of encouraging earlier referrals, potentially making it easier to support survivors, but also to change public perceptions of domestic abuse and drive down the instances of its occurrence. I would like to thank Skylark for their help in supporting this work.

At the 'system' level we have seen the Crown Prosecution Service initiate consultation on a change that would require victims of sexual crime to disclose their phone detail as a condition of case investigation. We wait to see if this change will be implemented.

We are fortunate to have a fantastic team at ESDAS and I am sure that they will continue to meet the challenges they face this year with grace and good humour, and that the individuals and families accessing support will continue to have the benefit of a needs based service.



# Our Year at a Glance

Via phone calls and emails, we had

**9,122**

contacts with survivors

**1 every 40 minutes**



We received

**2,052**

referrals from partner agencies this year

**1 every 4 hours**



We found that

**824**

survivors were classified by the DASH questionnaire as at either high or medium risk of harm - that's

**40%**

## Survivor Stats

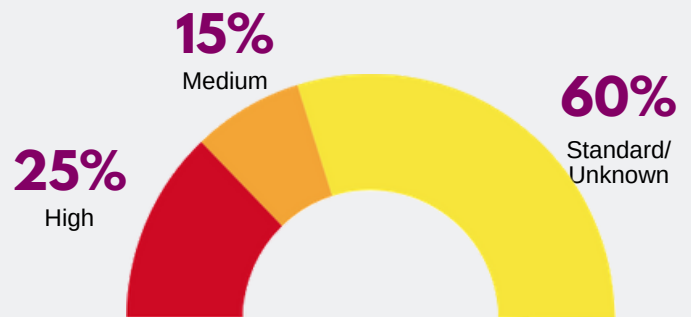


**92%**

female

**8%**

male



**DASH Risk Levels**

## Survivor Support

At ESDAS we come alongside survivors in their day-to-day lives, helping them deal with other agencies to access the support they need. We also operate on their behalf, advocating for them and liaising with partner agencies.



We advocated for survivors at **559** multi-agency meetings

We liaised with partner agencies on their behalf on **7,522** occasions

MARAC - We worked with **341** cases issued as high risk



We advocated for these children on **124** occasions

# Summary of the Year

Our **OBJECTIVES** are the relief of need, hardship and distress of persons who have suffered and are suffering from domestic abuse and any children of such persons in particular by the provision of advocacy, advice, support and information.

We strive to **PROVIDE** a needs-led, trauma informed, strengths based approach to service delivery.

Between 1st April 2018 and 31st March 2019

- We received **2,052 adult referrals**
- We dealt with **9,122 contacts** from survivors
- We undertook **666 face-to-face outreach appointments and joint visits** with survivors
- We advocated for our survivors at **559 multi-agency meetings** and liaised with partner agencies on behalf of our survivors on **7,522** occasions
- We worked with **39 children and young people** referred into ESDAS, organising **121 one-to-one meetings** and **148 parent consultations**
- We worked with **824 cases** which were classified as at either high or medium risk of harm

We **RAN** Community Freedom Programmes, the Recovery Toolkit Programme, a Fortnightly Drop-in Support Group, a Counselling Service for survivors, a Legal Advice Drop-in and the Sanctuary Scheme. **76 women** benefitted from these activities in 2018/19

As members of the Surrey Against Domestic Abuse Partnership (SADA) we ensured that **SURVIVORS VOICES** were heard at all levels within the SADA partnership and have supported the development of the new Surrey Against Domestic Abuse Strategy 2018-2023.

We have delivered **TRAINING** to partners including to 169 GPs on **Identification and Referral to Improve Safety (IRIS)** and to Surrey Police on DA Matters and the DASH Risk Assessment Checklist.

We have continued to develop ways for our **VOLUNTEERS** to support service users and have increased the number of volunteers working with us. Volunteers provided **1,330** hours of their time to support ESDAS service users at court hearings, appointments, giving peer support through befriending, and support through the ESDAS Group Work Programme. Our Volunteers also helped with a range of awareness raising and fundraising activities.

We continued to **RAISE AWARENESS** of domestic abuse and promote healthy relationships in order to achieve better outcomes for all.

# Summary of the Year

The work of ESDAS was recognised by two major awards this year:

- Nominated by Surrey Police, Michelle, our CEO, was awarded an MBE in the New Year's Honours List for services to Victims and their Families in Surrey. Michelle says that "without survivors of domestic abuse and their children being brave enough to trust me with their experiences I would not have been able to do any of the work I am being recognised for. My greatest achievement is having had the privilege of supporting and knowing so many survivors who through their bravery have inspired me to keep fighting for their voices to be heard.'
- ESDAS was the proud recipient of one of the ten prestigious 2019 Glaxo Smith Kline Impact Awards for charities working in the health sector. As well as a financial prize, the scheme provides training for senior staff, mentoring and links to a network of valuable contacts. A video of our work, featuring staff and our offices can be seen on Youtube.

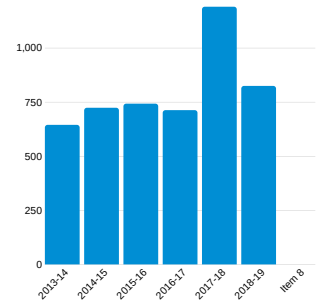
**<https://www.youtube.com/watch?v=mRPn2nG7tIs>**

After an exceptional 23% increase last year, adult referrals dropped to the levels of the previous year (2052) but the number of medium and high risk cases continues to be high (824). As expected, due to the gendered nature of domestic abuse 91.6% of referrals involved female survivors. In their lifetime, more than 1 in 4 women will be subject to Domestic Abuse including coercive control.

Referrals come from many statutory agencies, with the police accounting for around half (1072) and there were also 339 self-referrals.



High and medium risk cases



As one of the three services nationally taking part in the Women's Aid Change that Lasts Programme we continue to engage with initiatives such as training Ask Me Community Ambassadors and Trusted Professionals. The VOICES element is rolling out with tools and resources for staff teams for casework, staff wellbeing and resources and skills for managers.

Thanks to the Community Foundation for Surrey we have been able to update our IT hardware and as part of Change that Lasts have upgraded our survivor database system.

As the lead partner of the four Surrey services, we have been instrumental in assisting the transition of the SW Surrey DA Services to Citizens Advice Waverley. We have worked on updating service standards, standardising policies, training and staff induction across the county.

We continue to deliver training to all new police officers, either new in service or new in county.



# Children's Work

The aims of the service are to:

- build trusting relationships
- develop social skills
- provide opportunities for children and young people (CYP) to be listened to and guide them to express their emotions appropriately
- help them to make sense of their experiences
- build resilience to face life's adversities



Our **2** part-time children's workers worked with **39** CYP, holding **124** 1 to 1 meetings with them, advocating their voices at **50** meetings including Case Conferences, Family Group Conferences, Looked After Children Reviews, Educational Review Meetings, CAFCASS, CAMHS and other professional network meetings.

They held **146** parent consultations with non-abusive parents to advise on parenting issues and to understand the children's needs from the children's perspective. They also provided 39 family sessions to explore dynamics in the home and the use of appropriate boundaries.

They provided **112** consultancy sessions to Social Workers, Family Support Workers and Early Help Professionals in the East Surrey Social Care Team.

They also offer consultations to Outreach workers to help them empower survivors in their parenting role so children can be helped to cope and heal.

# Children's Work



We have facilitated the training of a cohort of AVA (Against Violence and Abuse) leaders from Surrey County Council Children's Services, Surrey Family Support, Surrey Family Services and Welcare who this year, along with ESDAS, have led groups for 32 CYP and 13 mothers.

These 12 week Community Group Programmes focus on core issues such as understanding abuse, reducing self-blame, managing emotions around hurting, separation, shame, guilt and loss, and aims to repair the mother-child bond.

"My relationship with my daughter is different, more loving and open"

"My children's relationship with each other is much better. They are more loving and less violent towards each other."

"It helped me open up more, make friends"

"Not bottling up my emotions"



# Volunteers

**24** Volunteers, excluding the management committee, gave **1330** hours of their time to support service users at Court Hearings, Police Custody appointments, Housing meetings, Sanctuary Scheme Assessments, Medical appointments, Citizens Advice meetings, helping with completing legal forms, accessing Food Banks and Second Hand Furniture suppliers, and providing transport.

They peer support befriended **4** service users and their children and supported the ESDAS Group Work Programme. Their roles included co-facilitating the Drop In Support Group, Freedom Programme and Recovery Toolkit and providing emotional and practical support during these groups. **42** service users took part in **22** Drop-In sessions, **11** survivors were supported through the 1 to 1 Freedom Programme Home Study Course and **3** volunteer counsellors provided **202** free sessions to **22** clients. Volunteers also helped to pack and deliver Christmas Hampers to **15** families and their **31** children.

Volunteers helped with a range of awareness raising and fundraising activities and attended a variety of internal and external courses to further their development.

*"It rebuilt my self-belief,.. instinct, confidence and I felt in very safe hands, I found the process rewarding."*



*"I wasn't expecting all of that - thank you so much, you have made our Christmas!"*

*.. "My counsellor gave me respect and showed me how to treat myself in a good way again." ∴*





# Groupwork

## Freedom Programme

The Freedom Programme is a domestic abuse programme which was created by Pat Craven and evolved from her work with perpetrators of domestic abuse.

The Freedom Programme examines the roles played by attitudes and beliefs on the actions of abusive men and the responses of victims and survivors.

The aim is to help them to make sense of and understand what has happened to them. We have facilitated 4 programmes in 2018/19 in Redhill and Dorking. These were attended by a total of 25 women.

## The Recovery Toolkit

This programme, developed by Sue Penna Associates, is designed to assist women affected by DA to develop positive lifestyle coping strategies and includes basic cognitive behavioural therapy principles.

Aimed at women who are separated from their perpetrators, we delivered the 12 week programme to 9 women.

"I feel safer in body and mind, I've accepted my past and confident  
as a single mum"

"It has improved my personal relationships and my ability to voice my needs and make and trust my decisions"

"I am taking away the hope for recovery. The realisation of the situation I was in. I will  
never go back"



# Groupwork

## Drop-In Support Group

The fortnightly Drop-In Support Group was attended by 42 women. Volunteers and ex-service users also attended the group to provide enhanced peer support.

The group aims to empower survivors to share their experience of DA in a safe space, to reduce isolation and to rebuild support networks.



"It's great to know this group is always here for us. Even if I don't come for a long time I know I can come back if I need to and there will always be friendly  
• faces and I won't be judged."



# Other Services

## Legal Advice Drop-in

We continue to offer free legal advice to our survivors about a range of issues via a fully trained solicitor who attends our office weekly. Many of our survivors have successfully obtained injunctions, child contact orders and other legal advice which without this service would have been more difficult to access. This year we have been able to provide 220 free legal advice appointments."

**220** survivors given free legal advice



## MARAC

Our Services Manager continues to attend the monthly Multi-Agency Risk Assessment Conferences aimed at increasing the safety and well-being of survivors and/or their children who are believed to be at the highest risk of harm. In the past year we have supported those identified as high risk on 341 occasions at MARAC.

**341**

occasions when high-risk survivors were flagged at MARAC





# Other Services

## Counselling Service

Survivors are offered between 6 and 12 sessions by our Service Counsellor and three volunteer Counsellors. This year our counselling service saw 84 survivors over 502 sessions.

All evaluation forms recorded improvement of mood and health, reduction in isolation and feelings of being more resilient and confident.

**502** counselling sessions with **84** survivors this year



"It rebuilt my self belief, instinct, confidence, and I felt in very safe hands. I found the process rewarding"

"I found my peace of mind"



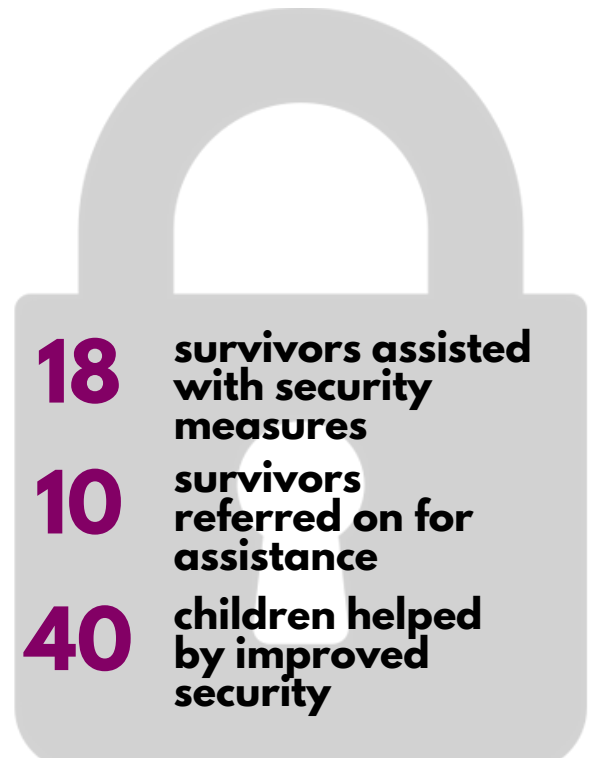
# Other Services

## The Sanctuary Scheme

This scheme is run in collaboration with Reigate & Banstead BC, Mole Valley DC, Tandridge DC, Raven Housing Trust, Circle Housing Association, Surrey Police and Surrey Fire & Rescue Service to **provide free security measures to high risk survivors**. The scheme is fundamental in the prevention of homelessness and managing risk.

We provided assistance to 18 survivors and a further 10 were referred to housing associations or councils for assistance. 40 children were helped by these measures.

Security measures included installing a sanctuary room, providing lock change, additional locks to windows and doors, mobile phone top-up, new sim cards, installation of community alarms, and security lighting.



## Specialist Domestic Abuse Court (SDAC)

We run the Independent Domestic Violence Advisor (IDVA) services working within the Surrey SDAC based at Guildford Magistrates each Thursday in partnership with the 3 other DA Outreach Services in the County.

All victims involved in the criminal justice system either as victims or witnesses continue to be contacted prior to the 1st hearing, are **supported throughout the court process** and updated about bail conditions and sentencing results.

Onward referral to our specialist outreach services ensures that survivors receive seamless support from all providers and their support needs are continually assessed and appropriate services offered.



# Other Services

## Identification & Referral to Improve Safety (IRIS)

IRIS was launched in April 2015 and we have been delighted with the progress of IRIS East Surrey thanks to the support of the Surrey OPCC, Reigate & Banstead BC, Tandridge DC and East Surrey CCG. Since the launch of IRIS we have trained 169 GPs and received 168 referrals from IRIS trained practices. IRIS provides us with an opportunity to intervene at the earliest opportunity minimising harm and risk at the point of disclosure.

A higher proportion of older women come through the primary care route than do through traditional routes. Older women, more susceptible to the full range of abuse including elder abuse, are often further away from services and have less contact with other services who would otherwise refer them in to ESDAS. Many of these women will have endured many years of abuse and their health is therefore adversely impacted by this experience, some may require recovery work, some may still be in their relationships with no intention of leaving but can be given safety advice and assurance that they are not to blame for the abuse.

Crucially, the IRIS referrals provide an opportunity for agencies to information share and risk-manage previously 'invisible' survivors. One of the significant challenges in older age groups is establishing a safe point of contact as, post retirement, domestic abuse can increase with couples spending all of their time together.



## Multi-Agency Strategic Work

We have a robust and growing membership of individuals, service users, and representatives of agencies and organisations.

- We ran one Multi-Agency Membership Meeting to review last year's achievements and develop objectives for 2019/20.
- We are part of the Surrey Domestic Abuse Management Board which is a sub group of the Surrey Community Safety Board which is responsible for domestic abuse strategically across all agencies in Surrey.
- We also sit on the Surrey Domestic Abuse Delivery Board, Surrey Suicide Prevention Group, South East Area Safeguarding Children Group and many more.

## Publicity Group

We have a dedicated Publicity Group led by a small staff team and supported by our volunteers and aimed at ensuring our services are widely publicised within our area. Each year we devise a Publicity Action Plan which enables us to identify key community events and/or individuals and agencies which require targeted action.

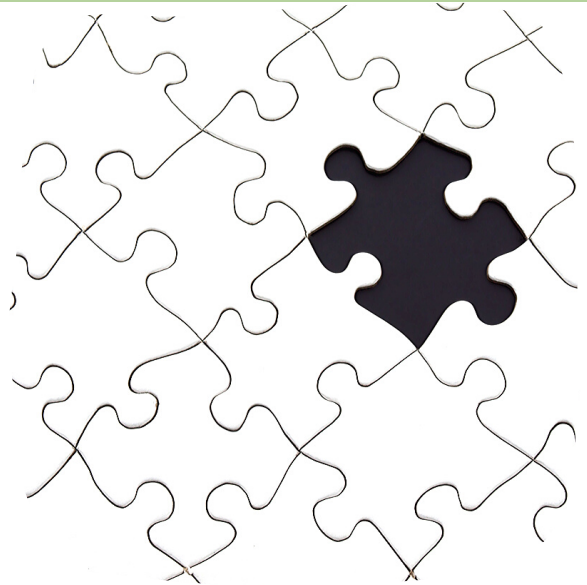


# Other Services

## Inter & Multi-Agency Working

We are committed to the principle of joint working, and to this end we participate in a number of meetings locally and across Surrey.

The needs of our survivor group are so complex and diverse it is essential that we continue to strive to provide a genuinely holistic and seamless service.



## Staff Development

ESDAS has a strong commitment to both the personal and professional development of paid staff and volunteers.

We recognise the importance of keeping up to date with issues affecting both our clients and the agencies we work alongside. Staff have attended:

- Women's Aid DAPA Training
- SafeLives "Responding to older people affected by DA" IDVA training
- ASSIST Suicide Prevention Training
- Ask Me Ambassador training
- Safeguarding children training
- Supporting male victims training
- First Aid training
- Community Groups AVA training



# Training & Awareness Raising

**We continue to support the delivery of the 'Understanding Domestic Abuse: A Multi-Agency Approach' course through the provision of trainers and we deliver all the specialist courses on the DA Training Framework.**

In addition to the above we deliver a training for professionals and community organisations, such as multi-agency training, tailored agency specific training, or short presentations. We also attend a number of events to raise our profile. We have in particular:

- Continued to co-provide the training to Surrey Police Probationers, Area Policing Teams, Contact Centre and Force Control Room staff and specialist Safeguarding Investigation Unit (SIU) officer training including accredited DASH training and DA Matters First Responder Training.
- We co-deliver and support the training and development of the Surrey Police DA Matters Mentors via continued professional development training days.

- Delivered 'Surrey Domestic Abuse Trainer Update', 'Understanding Domestic Abuse: A Multi-Agency Approach', 'Domestic Abuse within the Lesbian, Gay, Bi-Sexual and Trans Plus Population', and 'Engaging Safely with Perpetrators of Domestic Abuse'.
- We worked with the Court Service to deliver DA training to Magistrates across Surrey and Sussex.
- Undertaken significant work with our health partners at East Surrey Hospital, First Community Health and with GP Safeguarding Leads to ensure they are DA and ESDAS aware.
- DA Awareness and ESDAS Services talks to Children's Centres, Youth Projects, Home School Link Workers, Welcare, Community Connections partners, student Social Workers and Mental Health Team practitioners

In total we delivered 46 days or half-days of training and awareness-raising.





# Fundraising

**Our staff, volunteers, trustees, partner agencies and local community have been active in raising awareness and funds for ESDAS.**

We are as ever overwhelmed by the generosity of our supporters who have given their time and money, despite the challenging economic climate to ensure we can continue to provide services to those most in need.

In 2018/19 we have been fortunate to receive numerous donations from individuals, community groups and organisations as well as being beneficiaries of various sponsored events and we value every contribution, large and small.

Financial contributions enable us to continue delivering vital services but equally importantly, the awareness raising and community spirit essential in these efforts truly reflects the compassion and commitment shown by all involved.

On behalf of our clients,  
thank you to all those who  
have made this possible



Some examples of help that fundraising has enabled us to provide:

Removal costs for a family moving  
from emergency accommodation  
Security sensor lights  
B&B emergency accommodation  
Transport to a refuge  
School uniforms  
Supermarket food vouchers  
Toys for birthday presents  
Summer days out to the seaside or cinema

# Some of Our Supporters



COMPANY OF ACTUARIES  
CHARITABLE TRUST FUND

# Financial Review

We continue to work with the Surrey DA Joint Commissioning Group to ensure that survivors and children receive the right services at the right time wherever they are in the County. This group represents the Office of the Police & Crime Commissioner for Surrey (OPCC), Surrey County Council (SCC) and Surrey Police as main partners in the group. During 2018/19 we have continued to provide specialist DA Outreach within East Surrey and provide IDVA services at our locally at MARAC, responding to DVPN/O's & DVDS applications as well as working in partnership to deliver IDVA support at the Surrey Specialist Domestic Abuse Court. Funding from OPCC, SCC and numerous trusts and foundations enable us to provide 1 to 1 and group work to children and young people affected by DA.

Our three Local Authority partners and East Surrey Clinical Commissioning Group continue to support us financially by providing funding for adult outreach services enabling us to provide services to more survivors in our communities. In addition to this Tandridge District Council and Reigate & Banstead Borough Council continue to support the innovative development and delivery of IRIS East Surrey.

Principal Funding Sources are the Office of the Police & Crime Commissioner for Surrey, Surrey Police, Surrey County Council, East Surrey Clinical Commissioning Group, the local authorities of Reigate & Banstead, Tandridge and Mole Valley and Surrey Supporting People.



We are pleased that we have managed to maintain a successful and efficient service for our beneficiaries thanks to the funding outlined above and the generosity of numerous Trusts, Foundations and individuals.

We are indebted to all those who support our work and not least individuals and local groups who have made donations and/or raised money for direct survivor support such as emergency food, travel, school uniforms, essential security measures etc.

# Financial Review

## Investment Policy

The Management Committee has adopted a policy for the management of the Charity's funds which limits the amount placed with any one financial institution and further attempts to limit risk by seeking to place or deposit funds in a way which they feel may be deemed prudent in the prevailing economic climate.

The Charity's income is received by various payments in an uneven pattern over the financial year and careful management of the funds available ensures that whilst sufficient funds are always on hand to meet expected expenditure, further funds may always be withdrawn from deposit to cater for any unforeseen expenditure.

The return on funds held by ESDAS is determined by the very low rates of interest that are available; the charity has no plans to increase its return on funds by increasing the current level of risk or changing its current policies.



## Reserves Policy

It is the policy of ESDAS that unrestricted funds which have not been designated for a specific use should be maintained at a level equivalent to between three and six months' expenditure. The trustees consider that reserves at this level will ensure that, in the event of a significant drop in funding, they will be able to continue the charity's current activities while consideration is given to ways in which additional funds may be raised or survivors assisted in finding alternative sources of support.

This level of reserves is reviewed annually. Additionally funds are held in reserve to cover contractual commitments in respect of staff redundancy and lease commitments.

# Plans for Future Periods

**ESDAS will continue to provide all existing services subject to satisfactory funding arrangements. A Business Plan for 2018-2023 is in place with an action plan for meeting the immediate objectives for 2019/20 which are to:**

- Ensure that our services are survivor centred and aim to deliver the highest quality services within a needs-led, trauma informed, strengths based framework that places the survivor as expert of their own experiences.
- Use our expertise, knowledge and influence to raise the status of survivors (both adult and children) in all aspects of service delivery and strategy.
- Work with survivors and children to ensure that our services, strategy and governance reflect their lived experiences of domestic abuse including the intersectionality of experiences.
- work with partners including the public and voluntary sector to co-develop and co-deliver transformation programmes aimed at improving cross agency responses to survivors and their children.
- Support the development and delivery of Change that Lasts both locally and nationally in particular embed VOICES into our service delivery.
- Work with Women's Aid England and our partners to achieve National Service Standard Accreditation
- Ensure that we are at the forefront of or leading the way in relation to providing and informing services to improve the lives of those affected by domestic abuse.





# Structure, Governance and Management

ESDAS is a charitable company limited by guarantee, incorporated in May 1998 and registered as a charity in 2002. The company was established under a Memorandum of Association and is governed under its Articles of Association.

The directors of the company are also charity trustees for the purposes of charity law and under the company's articles are known as members on the Management Committee. Members of the Management Committee are elected by members to serve for a period of three years after which they must be re-elected at the next AGM. In addition one third of the places on the Management Committee should come up for election at each AGM.

ESDAS has a Recruitment and Code of Conduct Policy and tries to ensure its Committee is representative of the community and survivors it serves and has the necessary skills mix to carry out its duties. We aim to have service user and volunteer participation. All members of the Management Committee give their time voluntarily and receive no benefits from the charity. Any expenses reclaimed from the charity are set out in note 6 to the accounts.

ESDAS has a Board Induction Programme based on recommended good practice and supplemented by the distribution of relevant printed material appertaining to Management Committees and our activities. Periodic individual skills analysis and Board self-assessment is undertaken, and all Committee members are kept informed of training courses which they may wish to access. Self-development is actively encouraged and Trustees attend Governance training each year.

A Risk Management Policy is in place and the major risks to ESDAS have been identified. Further detail is available in our Business Plan for 2018-23. Health & Safety is an agenda item at every Team Meeting, during individual supervision sessions and at Management Committee meetings. MARACs (Multi Agency Risk Assessment Conferences) are held monthly to inform and co-ordinate work with very high-risk survivors. Fortnightly Safeguarding Review meetings are held internally in relation to the children & young people involved in our Children's Services. Internal risks are minimised through policies, procedures and training for financial controls, health and safety and the successful maintenance of ISO 9001.

The Management Committee is comprised of 7 members (the maximum allowed is 10) who meet every two months and are responsible for the strategic direction and policy of the organisation. The Chief Executive attends all Committee Meetings in a non-voting capacity and a scheme of delegation is in place for the post holder to assume day-to-day responsibility for the provision of services and meeting the monitoring and evaluation requirements of stakeholders. There are clearly established lines of accountability, support and supervision for all staff and volunteers.

ESDAS, while mindful of meeting its stated objects, is influenced by national and local policy. As affiliated members of Women's Aid Federation England we are informed of national initiatives, policies, good practice and training. Regionally we are active members and contributors to the Surrey Domestic Abuse Strategy and at a local level we participate in a number of multi and inter- agency initiatives.

# Structure, Governance and Management

Company law requires the Management Committee to prepare financial statements for each financial year which give a true and fair view of the state of affairs of the charitable company as at the balance sheet date and of its incoming resources and application of resources, including income and expenditure, for the financial year.

In preparing these financial statements, the management committee has followed best practice and:

- selected suitable accounting policies and applied them consistently
- made judgements and estimates that are reasonable and prudent
- prepared the financial statements on a going concern basis

The Management Committee has been responsible for maintaining proper accounting records which disclose with reasonable accuracy at any time the financial position of ESDAS thereby enabling them to ensure that financial statements comply with the Companies Act 2006. The Committee has also been responsible for safeguarding the assets of ESDAS and taking reasonable steps for the prevention and detection of fraud and other irregularities.

## Accountants

Braidwood Wheeler & Co were re-appointed as the charitable company's independent examiners at the 2018 Annual General Meeting. Braidwood Wheeler & Co have expressed their willingness to continue to act as the company's independent examiners.

## Risk factors

The Management Committee have assessed the major risks to which the charity is exposed, and are satisfied that systems are in place to mitigate exposure to the major risks. As a partner of choice for our statutory funders we remain totally committed to meeting the requirements of the funders in an effective and efficient manner with full accountability for the service that we provide and so reduce any risks to our future funding.

Approved by the Management Committee on 11th November 2019 and signed on its behalf by:



Simon Bland (Chairman)

# Accounts and Financial Report

## INDEPENDENT EXAMINER'S REPORT TO THE TRUSTEES OF

### EAST SURREY DOMESTIC ABUSE SERVICES (ESDAS)

*For the Period 1st April 2018 to 31st March 2019*

---

I report to the trustees on my examination of the accounts of the charitable company for the year ended 31<sup>st</sup> March 2019 which are set out on pages 29 to 38.

#### Responsibilities and basis of report

As the charity trustees (who are also the directors of the company for the purposes of company law), you are responsible for the preparation of the accounts in accordance with the requirements of the Companies Act 2006 ("the 2006 Act") and the Charities Act 2011 (the Act).

The charity's trustees consider that an audit is not required for this year under Part 16 of the 2006 Act and that an independent examination is needed. The charity's gross income exceeded £250,000 and I am qualified to undertake the examination by being a qualified member of the Association of Chartered Certified Accountants.

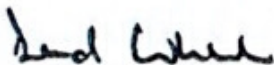
I report in respect of my examination of the charitable company's accounts as required under section 145 of the 2011 Act and in carrying out my examination I have followed all the applicable directions given by the Charities Commission under section 145(5)(b) of the Act.

#### Independent examiner's statement

I have completed my examination. I confirm that no material matters have come to my attention in connection with the examination giving me cause to believe that in any material respect:

1. Accounting records were not kept in respect of the charity as required by section 130 of the Act, or
2. That accounts do not accord with those records
3. That accounts do not comply with the applicable requirements concerning the form and content of accounts set out in the Charities (Accounts and Reports) Regulations 2008 other than the requirement that the accounts give a "true and fair view" which is not a matter considered as part of an independent examination.

I have no concerns and have come across no other matters in connection with the examination to which attention should be drawn in this report in order to enable a proper understanding of the accounts to be reached.



David Wheeler F.C.C.A.  
Braidwood Wheeler & Co  
Chartered Certified Accountants  
Goodman House  
13a West Street  
Reigate  
Surrey  
RH2 9BL

Date 31 October 2019



# Accounts and Financial Report

## EAST SURREY DOMESTIC ABUSE SERVICES (ESDAS)

### STATEMENT OF FINANCIAL ACTIVITIES (including Income and Expenditure Account) FOR THE PERIOD ENDED 31<sup>st</sup> MARCH 2019

	Notes	Unrestricted funds £	Restricted funds £	Total 2019 £	Total 2018 £
<b>Income from:</b>					
Donations including gift aid	2	-	11,207	11,207	31,050
Charitable activities	3	89,476	349,990	439,466	356,878
Investment income	1.3	914	-	914	1,233
Other	3	17,811	-	17,811	17,332
<b>Total</b>		<b>108,201</b>	<b>361,197</b>	<b>469,398</b>	<b>406,493</b>
<b>Expenditure on:</b>					
<b>Costs of generating funds</b>		<b>1,631</b>	<b>-</b>	<b>1,631</b>	<b>148</b>
<b>Charitable activities</b>	<b>4</b>	<b>153,598</b>	<b>323,860</b>	<b>477,458</b>	<b>431,883</b>
<b>Total</b>	<b>11</b>	<b>155,229</b>	<b>323,860</b>	<b>479,089</b>	<b>432,031</b>
<b>Net income/(expenditure)</b>		<b>(47,028)</b>	<b>37,377</b>	<b>(9,691)</b>	<b>(25,538)</b>
Transfers between funds		-	-	-	-
<b>Net movement in funds</b>		<b>(47,028)</b>	<b>37,377</b>	<b>(9,691)</b>	<b>(25,538)</b>
<b>Reconciliation of funds:</b>					
Fund balances brought forward		257,232	(4,763)	252,469	278,007
<b>Fund balances carried forward at 31st March 2019</b>		<b>210,204</b>	<b>32,574</b>	<b>242,778</b>	<b>252,469</b>

The statement of financial activities includes all gains and losses in the year. All incoming resources and resources expended derive from continuing activities

# Accounts and Financial Report

## EAST SURREY DOMESTIC ABUSE SERVICES (ESDAS)

### BALANCE SHEET

FOR THE PERIOD ENDED 31st MARCH 2019

	Notes	£	2019 £	£	2018 £
<b>Current assets:</b>					
Bank balances		257,833		257,436	
Cash on hand		1,341		684	
		259,174		258,120	
Debtors and prepayments	8	5,021		9,099	
<b>Total current assets</b>			<b>264,195</b>		<b>267,219</b>
<b>Liabilities:</b>					
Creditors: amounts falling due within one year	9	4,250		4,250	
Grants received in advance		17,167		10,500	
<b>Net current liabilities</b>			<b>21,417</b>		<b>14,750</b>
<b>Total net assets</b>			<b>242,778</b>		<b>252,469</b>
<b>The funds of the charity</b>					
<b>Restricted income funds</b>	10		32,574		(4,763)
<b>Unrestricted funds</b>	10				
Contingency reserve			206,765		223,682
General purposes fund			3,439		33,550
<b>Total charity funds</b>			<b>242,778</b>		<b>252,469</b>

The directors consider that the company is entitled to exemption from the requirement to have an audit under the provisions of section 477 of the Companies Act 2006 ("the Act") and have confirmed that no notice has been deposited under Section 476 of the Act. The directors have acknowledged their responsibilities for ensuring that the company keeps accounting records which comply with Section 386 of the Act and for preparing accounts which give a true and fair view of the company and of its profit for the year then ended in accordance with the requirements of Section 396 of the Act and which otherwise comply with the requirements of the Companies Act 2006 relating to the accounts, so far as applicable to the company.

The accounts are prepared in accordance with the special provisions of Part 15 of the Companies Act 2006 relating to smaller entities and were approved and authorised for issue by the management committee on 11<sup>th</sup> November 2019 and signed on its behalf by



Simon Bland (Chairman)



Phillip Bell (Finance Director)

# Accounts and Financial Report

## EAST SURREY DOMESTIC ABUSE SERVICES (ESDAS)

### CASH FLOW STATEMENT

FOR THE PERIOD ENDED 31st MARCH 2019

	Notes	2019 £	2018 £
<b>Cash flows from operating activities:</b>			
<b>Net cash provided by (used in) operating activities</b>		<b>140</b>	<b>(47,721)</b>
Interest received		914	1,233
Change in cash and cash equivalents in the year		1,054	(46,488)
Cash and cash equivalents at the beginning of the year		258,120	304,608
<b>Cash and cash equivalents at the end of the year</b>		<b>259,174</b>	<b>258,120</b>
<b>Reconciliation of net income / (expenditure) to net cash flow from operating activities</b>			
	Notes	2019 £	2018 £
<b>Net income / (expenditure) for the year</b>		<b>(9,691)</b>	<b>(25,538)</b>
<b>Adjustments for:</b>			
Interest received		(914)	(1,233)
(increase) / decrease in debtors		4,078	4,254
increase / (decrease) in grants in advance		6,667	(4,500)
increase / (decrease) in creditors		-	(20,704)
<b>Net cash provided by (used in) operating activities</b>		<b>140</b>	<b>47,721</b>

# Accounts and Financial Report

## EAST SURREY DOMESTIC ABUSE SERVICES (ESDAS)

### NOTES TO THE FINANCIAL STATEMENTS FOR THE PERIOD ENDED 31st MARCH 2019

---

#### STATUTORY INFORMATION

The charitable company is registered in England and Wales as a company limited by guarantee.  
Its registered office is at Redhill Chambers, 2D High Street, Redhill, Surrey, RH1 1RJ.  
The registration numbers are shown on page 4.

#### 1 Accounting policies

The principal accounting policies are summarised below. The accounting policies have been applied consistently throughout the year and in the preceding year.

##### 1.1 Basis of preparation

The financial statements have been prepared in accordance with the Statement of Recommended Practice applicable to Charities preparing their accounts in accordance with Financial Reporting Standard 102 (FRS 102) and the Companies Act 2006.

##### 1.2 Fund accounting

Unrestricted funds are available for use at the discretion of the trustees in furtherance of the general objectives of the charity.

Designated funds are unrestricted funds earmarked by the Management Committee for particular purposes.

Restricted funds are subject to restrictions on their expenditure imposed by the donor.

##### 1.3 Income

Income is accounted for as and when received, with the exception of certain income which is recognised in the period specified by the donor.

Where it is clear that a donor has specified a grant to be related to a fixed period for a specified use, these funds will be treated as deferred income and released to the Statement of Financial Activities to match the related expenditure.

Investment income is included when receivable.

##### 1.4.1 Expenditure

Expenditure is recognised on an accrual basis as a liability is incurred. Expenditure includes any VAT which cannot be fully recovered, and is reported as part of the expenditure to which it relates.

Costs of generating funds comprise the costs associated with attracting voluntary income.

Charitable expenditure comprises those costs incurred by the charity in the delivery of its activities and services for its beneficiaries. It includes both costs that can be allocated directly to such activities and those costs of an indirect nature necessary to support them. Governance costs include those costs associated with meeting the constitutional and statutory requirements of the charity and include accounting fees and costs linked to the strategic management of the charity.

All costs are allocated between the expenditure categories of the Statement of Financial Activities on a basis designed to reflect the use of the resource.

##### 1.5 Fixed assets

Fixed assets are written off in the year of purchase.

##### 1.6 Public Benefit

ESDAS is a public benefit entity whose objective is to provide services to specific members of the general public as set out in the Annual Report, and does not operate to provide a financial return for its members.

# Accounts and Financial Report

## EAST SURREY DOMESTIC ABUSE SERVICES (ESDAS)

### NOTES TO THE ACCOUNTS - continued FOR THE PERIOD ENDED 31st MARCH 2019

#### 2 Donations

	Unrestricted funds £	Restricted funds £	Total 2019 £	Total 2018 £
Other donations including gift aid	-	11,207	11,207	24,050
Donations from related parties	-	-	-	7,000
	-	11,207	11,207	31,050

#### 3 Income from charitable activities

	Unrestricted funds £	Restricted funds £	Total 2019 £	Total 2018 £
SLA partnership funding	-	100,084	100,084	100,084
Local Authority funding	-	-	-	-
Reigate & Banstead, Mole Valley and Tandridge	-	32,500	32,500	35,500
SCC Children's Service	-	25,000	25,000	18,750
Other non statutory grants	-	3,100	3,100	13,080
Sanctuary scheme	-	9,326	9,326	6,326
IRIS - Reigate & Banstead and Tandridge	-	32,000	32,000	41,000
Community Foundation Strategic Project	-	10,964	10,964	-
E Surrey Commissioning Group	-	20,324	20,324	20,324
Office of Police & Crime Commissioner	-	19,359	19,359	19,677
Office of Police & Crime Commissioner	-	52,787	52,787	44,250
Office of Police & Crime Commissioner	-	9,568	9,568	7,500
Richmond Fellowship	-	12,504	12,504	-
Comic Relief	8,541	-	8,541	17,929
Community Foundation for Surrey (Tampon Tax)	-	9,955	9,955	8,511
Tesco Bags of Help	-	6,000	6,000	-
Change That Lasts	62,500	-	62,500	-
Women's Aid Federation - OASIS	-	4,880	4,880	-
Earned income	18,435	1,639	20,074	23,947
	89,476	349,990	439,466	356,878

Other income is generated from fund raising activities

# Accounts and Financial Report

## EAST SURREY DOMESTIC ABUSE SERVICES (ESDAS)

### NOTES TO THE ACCOUNTS - continued FOR THE PERIOD ENDED 31st MARCH 2019

#### 4 Expenditure

	Basis of Allocation	Charitable expenditure £	Governance £	Total 2019 £	Total 2018 £
<b>Costs directly allocated to activities</b>					
Salaries & NI	Direct	276,614	-	276,614	269,721
Travelling expenses	Staff time	12,330	-	12,330	11,880
Recruitment costs	Direct	-	485	485	768
Volunteer & MC training	Direct	779	-	779	944
Volunteer expenses	Direct	2,156	-	2,156	1,383
Counselling & user groups	Direct	11,689	-	11,689	11,152
Client & family support	Direct	14,297	-	14,297	7,756
Child support	Direct	7,055	-	7,055	619
Training & supervision	Staff time	12,583	-	12,583	10,000
Accounting fees	Direct	-	2,070	2,070	1,620
<b>Support costs allocated to activities</b>					
Premises costs	Floor space	34,282	-	34,282	38,971
Office based staff	Direct	56,187	-	56,187	51,496
General running costs	Staff time	38,355	-	38,355	23,705
Publicity and printing	Staff time	3,173	-	3,173	410
Office equipment	Direct	523	-	523	1,458
Project costs	Direct	4,880	-	4,880	-
		474,903	2,555	477,458	431,883
Cost of generating funds				1,631	148
<b>Total resources expended</b>				<b>479,089</b>	<b>432,031</b>



# Accounts and Financial Report

## EAST SURREY DOMESTIC ABUSE SERVICES (ESDAS)

### NOTES TO THE ACCOUNTS - continued FOR THE PERIOD ENDED 31st MARCH 2019

#### 5 Employees

##### Number of employees

The average monthly number of employees during the period was:

	2019 Number	2018 Number
Full Time Office based staff	1	1
Part time Office based staff	2	2
Full time Outreach Workers	4	4
Part time Outreach Workers	8	9
	<u>15</u>	<u>16</u>

##### Employment costs

	2019 £	2018 £
Salaries and wages	294,416	295,634
Employers National Insurance	22,709	22,893
Pension costs	5,676	2,691
	<u>332,801</u>	<u>321,218</u>

No employee received emoluments of more than £60,000.

ESDAS operates one pension scheme for its employees and administers contributions to a stakeholder pension scheme for 1 (2018 - 1) member of staff. ESDAS makes the contributions required by the Government to the approved NEST scheme for all salaried employees unless they have opted out.

#### 6 Trustee Remuneration and Related Party Transactions

No members of the management committee received any remuneration during the year. No Expenses including travel costs were reimbursed to members of the management committee during the year (2018 – Nil). No trustee or person related to the charity had any personal interest in any contract or other transaction entered into by the charity during the year (2018 – Nil).

#### 7 Taxation

As a charity, East Surrey Domestic Abuse Services is exempt from tax on income and gains falling within section 505 of the Taxes Act 1988 or s256 of the Taxation of Chargeable Gains Act 1992 to the extent that these are applied to its charitable objects

No tax charges have arisen in the charity.

# Accounts and Financial Report

## EAST SURREY DOMESTIC ABUSE SERVICES (ESDAS)

### NOTES TO THE ACCOUNTS - continued FOR THE PERIOD ENDED 31st MARCH 2019

<b>8</b>	<b>Debtors</b>	<b>2019</b>	<b>2018</b>
		<b>£</b>	<b>£</b>
	Prepayments and accrued income	5,021	9,099
		<u>5,021</u>	<u>9,099</u>
<b>9</b>	<b>Creditors: amounts falling due within one year</b>	<b>2019</b>	<b>2018</b>
		<b>£</b>	<b>£</b>
	Trade creditors	-	-
	Accruals	4,250	4,250
		<u>4,250</u>	<u>4,250</u>

During the year ESDAS acting as intermediary agent for the 3 other Surrey DA Outreach Providers, Chapter 1 Charity, CA Elmbridge West (formerly called Walton Weybridge & Hersham Citizens Advice Bureau) and your Sanctuary,

- Received funds amounting to £747,552,
- Paid out funds of £555,855
- Lead provider fee of £10,656

and owed £Nil as at 31<sup>st</sup> March 2019

#### 10 Summary of movement of funds during the year

	<b>General funds</b>	<b>Designated funds</b>	<b>Restricted funds</b>	<b>Total</b>
	<b>£</b>	<b>£</b>	<b>£</b>	<b>£</b>
Balances at 31 March 2018	33,550	223,682	(4,763)	252,469
Movement in the year	<u>(30,111)</u>	<u>(16,917)</u>	<u>37,337</u>	<u>(9,691)</u>
<b>Balances at 31 March 2019</b>	<u>3,439</u>	<u>206,765</u>	<u>32,574</u>	<u>242,778</u>



# Accounts and Financial Report

## EAST SURREY DOMESTIC ABUSE SERVICES (ESDAS)

### NOTES TO THE ACCOUNTS - continued FOR THE PERIOD ENDED 31st MARCH 2019

#### 11 Movement of funds (detailed)

	Balance at 1 April 2018 £	Incoming resources £	Resources expended £	Transfers £	Balance at 31 March 2019 £
<b>Restricted funds</b>					
SLA partnership funding	-	100,084	100,084	-	-
Reigate & Banstead, Mole Valley and Tandridge	-	32,500	32,500	-	-
E Surrey Commissioning Group	-	20,324	20,324	-	-
Richmond Fellowship	-	12,504	12,504	-	-
Mole Valley sanctuary Scheme	-	3,000	3,000	-	-
Tandridge DC sanctuary Scheme	-	3,000	3,000	-	-
Reigate & Banstead sanctuary Scheme	-	3,326	3,326	-	-
SCC Children's service	-	25,000	25,000	-	-
IRIS	-	32,000	32,000	-	-
OPCC - AVA	2,952	-	2,952	-	-
OPCC Children's service	-	19,359	19,359	-	-
OPCC - Outreach	-	11,250	11,250	-	-
OPCC - MARAC	-	15,833	15,833	-	-
OPCC - SDVC/IDVA	-	23,204	23,204	-	-
OPCC- Freedom	-	2,500	2,500	-	-
Surrey Police- CONE	-	9,568	9,568	-	-
Tesco Bags of Help	-	6,000	4,119	-	1,881
Community Foundation of Surrey: Strategic projects	-	10,964	-	-	10,964
Community Foundation of Surrey: Tampon tax	-	9,955	-	-	9,955
Specific use (other organisations)	(4,303)	4,880	-	-	577
Specific use ( individuals)	(3,412)	15,946	3,337	-	9,197
<b>Total restricted funds</b>	<b>(4,763)</b>	<b>361,197</b>	<b>323,860</b>	<b>-</b>	<b>32,574</b>
<b>Unrestricted funds</b>					
Contingency reserve	223,682	-	-	(16,917)	206,765
Other					
General purposes fund	33,550	108,201	155,229	16,917	3,539
<b>Total unrestricted funds</b>	<b>257,232</b>	<b>108,201</b>	<b>155,229</b>	<b>-</b>	<b>210,204</b>
<b>Total funds</b>	<b>252,469</b>	<b>469,398</b>	<b>479,089</b>	<b>-</b>	<b>242,778</b>

# Accounts and Financial Report

## EAST SURREY DOMESTIC ABUSE SERVICES (ESDAS)

### NOTES TO THE ACCOUNTS - continued FOR THE PERIOD ENDED 31st MARCH 2019

---

#### 12 Operating Lease Commitments

At 31<sup>st</sup> March 2019 the company had financial commitments under a non-cancellable operating lease of £80,000 which represents the rent for the two-year lease and the lease for the next break point.

#### 13 Movement of Funds (Continued)

##### *Purposes of Restricted Funds*

Surrey County Council funded the delivery of the specialist Multi Agency DA training.

Reigate & Banstead Borough Council and Tandridge District Council funded the establishment of an IRIS Advocate Educator to work with General Practitioners within their areas.

Additional funding was provided by the Borough and Districts to enable ESDAS to administer a Sanctuary Scheme to assist survivors who elect to stay in their own home.

Funding from Community Connections (The Richmond Fellowship) related to improving partnership working for those survivors experiencing mental ill health.

We were funded by Surrey Police to aid the Complex Offender Nominal Enforcement (CONE) perpetrator work.

Women's Aid funded our expert VOICES project as part of Change That Lasts.

Community Foundation for Surrey provided funding from the Tampon tax for empowering women and girls to achieve their potential and for volunteering and group work and for a Strategic IT project.

BIG Lottery gave funds to support DA survivors to return to work/training via the Pathways to Employment partnership project.

Company of Actuaries Charitable Trust supported our volunteer project.

Tesco Bags of Help provided specialist training for volunteers

Our AVA Community Groups Program for children and young people was supported by Tesco Bags of Help, BIG Give Christmas Challenge and COOP.

Donations made by members of the public and organisations which are not Restricted are held for specific use in assisting clients and their families and as such are not treated as general funds of the Services.

##### *Purposes of Unrestricted Funds*

Contingency Reserve – this is a Reserve established to provide a resource so that in the event that all income ceased the Charity could administer its affairs in an orderly manner and continue to support existing clients for a period of between 3 and 6 months. The reserve includes an allowance for the costs of staff redundancy and the charity's contractual commitment in respect of its lease. The Reserve is deemed necessary due to the financial uncertainty caused by having to re-apply annually for the majority of our grant funding, and the decisions of that process only being known shortly before the beginning of the new financial year. It is essential not only for employees but for our vulnerable client group, whose lives and welfare could be endangered by the sudden curtailment of support.

# Accounts and Financial Report

## ANNUAL REPORT GLOSSARY

AAFDA	Advocacy After Fatal Domestic Abuse
AVA	Against Violence & Abuse
CAADA	Coordinated Action Against Domestic Abuse
CAFCASS	Children & Family Court Advisory & Support Service
CAMHS	Child & Adolescent Mental Health Services
CBT	Cognitive Behavioural Therapy
CYP	Children and Young People
CMHRT	Community Mental Health Recovery Teams
DA	Domestic Abuse
DASH Assessment	Domestic Abuse, Stalking, Harassment and Honour Based Violence Risk Assessment
DV	Domestic Violence (used by the Home Office to describe Domestic Abuse)
DVDS	Domestic Violence Disclosure Scheme
DVPN	Domestic Violence Protection Notice
DVPO	Domestic Violence Protection Order
ESCCG	East Surrey Clinical Commissioning Group
ESDAS	East Surrey Domestic Abuse Services
HMIC	Her Majesty's Inspectorate of Constabulary
IDVA	Independent Domestic Violence Advisor
IRIS	Identification & Referral to Improve Safety
ISO 9001	is related to quality management systems and is designed to help organisations ensure that they meet the needs of customers and other stakeholders while meeting statutory and regulatory requirements.
MARAC	Multi-Agency Risk Assessment Conference
OPCC	Office of the Police & Crime Commissioner
PCC	Police & Crime Commissioner
PPIU	Public Protection Investigation Unit
SABPT	Surrey & Borders Partnership NHS Foundation Trust
SADA	Surrey Against Domestic Abuse
SDAC	Specialist Domestic Abuse Court
SDAS	Surrey Domestic Abuse Services
SLA	Service Level Agreement
SSCB	Surrey Safeguarding Children Board